



Remote Desktop: *Windows*

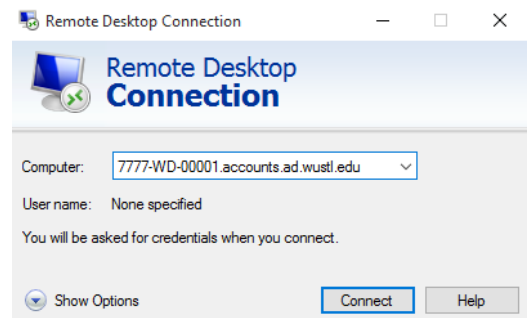
- Remote Desktop Connection allows you to access a particular computer, including its data and installed software. To use Remote Desktop from off-campus (on a non-WashU network), you must first connect using VPN.
- You will need to be granted access to use VPN, and granted access to log into a computer other than your own using Remote Desktop Connection.
- Your machine must also be configured to allow Remote Desktop Connections.
- Remote Desktop Connection is built into Windows, and does not require you to install anything.

Accessing Your Computer Using Remote Desktop Connection

These instructions are for machines migrated into Shared IT Services.

Before you begin: You will need the computer name that you want to connect to in order to complete these steps. If you need help locating this information, please email ITHelp@wustl.edu.

1. If you are not on WUSM-secure or another secure WashU network, you will need to connect through VPN before using Remote Desktop Connection (RDC). **Ensure your VPN is connected.**
2. **Open Remote Desktop Connection** (Windows 10: Start > All Apps > Windows Accessories > Remote Desktop Connection *or* Window 7: Start > All Programs > Accessories > Remote Desktop Connection)
3. **Enter the name of your computer** (labeled on your device), **followed by accounts.ad.wustl.edu.** (Example: 7777-WD-01111.accounts.ad.wustl.edu)
4. Enter your remoted device login credentials when prompted. Your username will be preceded by ACCOUNTS\
(Example: ACCOUNTS\yourWUSTLkey and your WUSTL key password.)
When connecting from a personally-owned device, RDC may have inserted the username from your computer (not your WUSTL key id). In that case, click Use another account.
5. Click **OK**.
6. Your Remote Desktop session opens.



Windows Security

[Enter your credentials](#)

These credentials will be used to connect to
7777-WD-00003.accounts.ad.wustl.edu.

